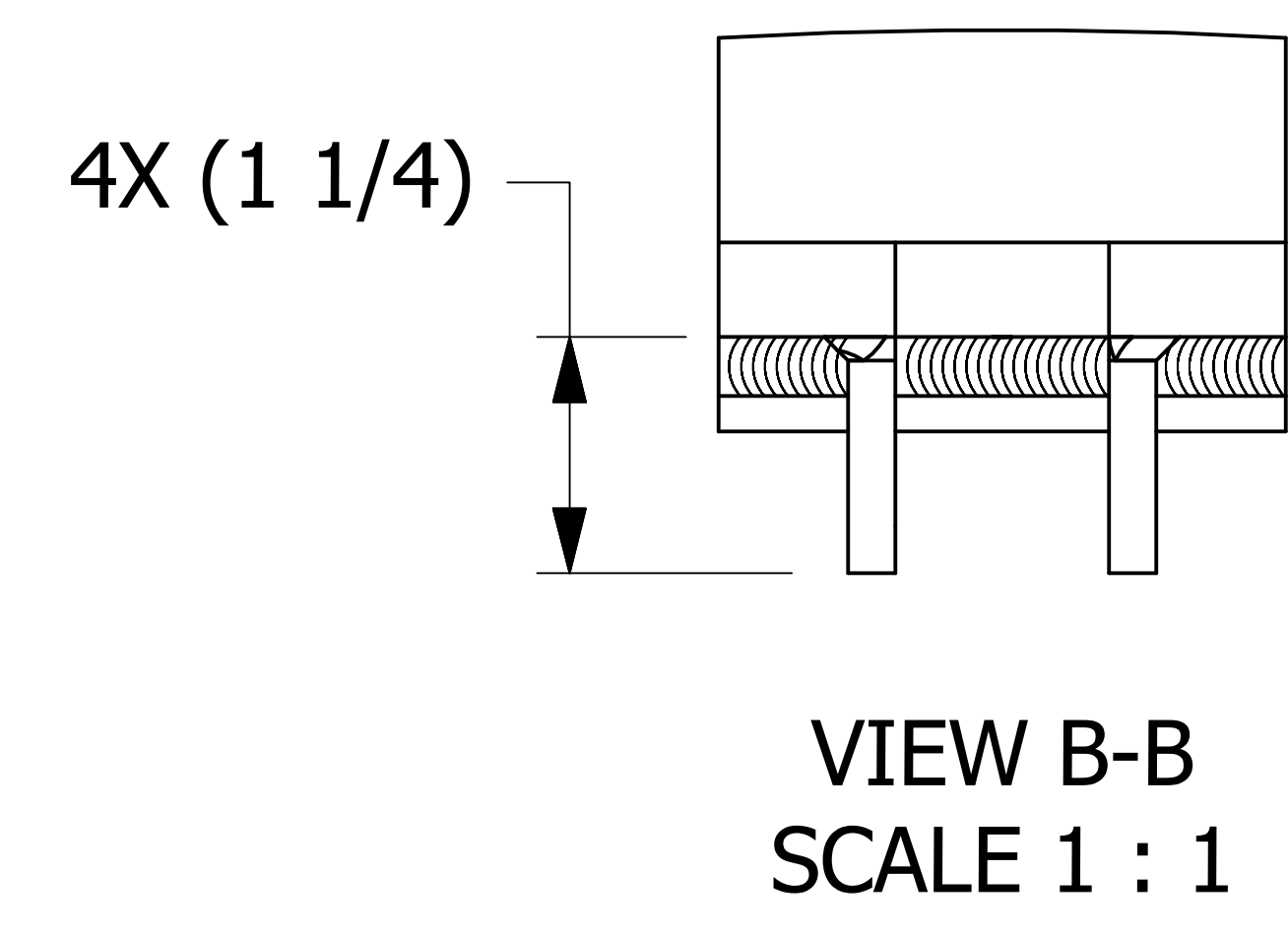
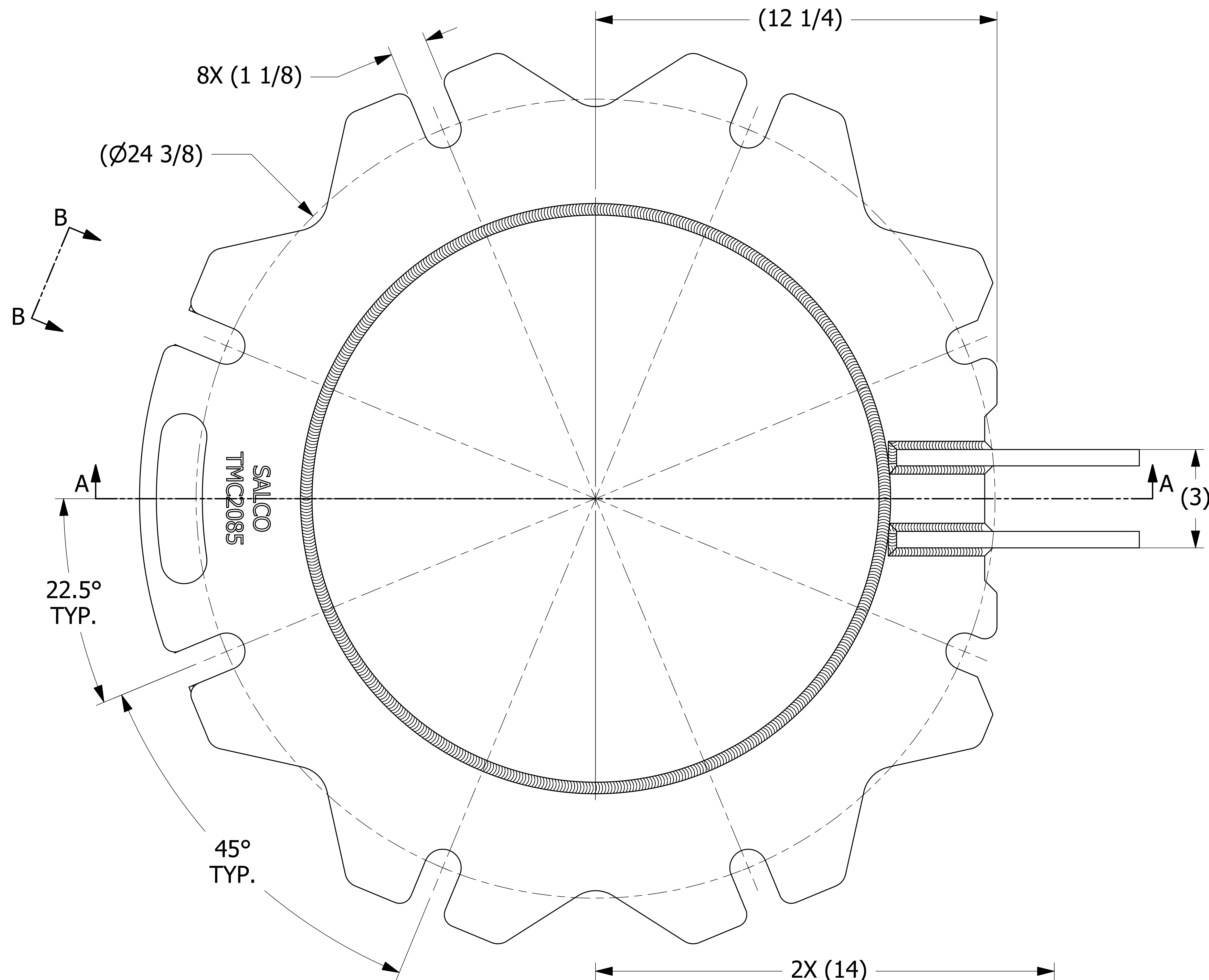
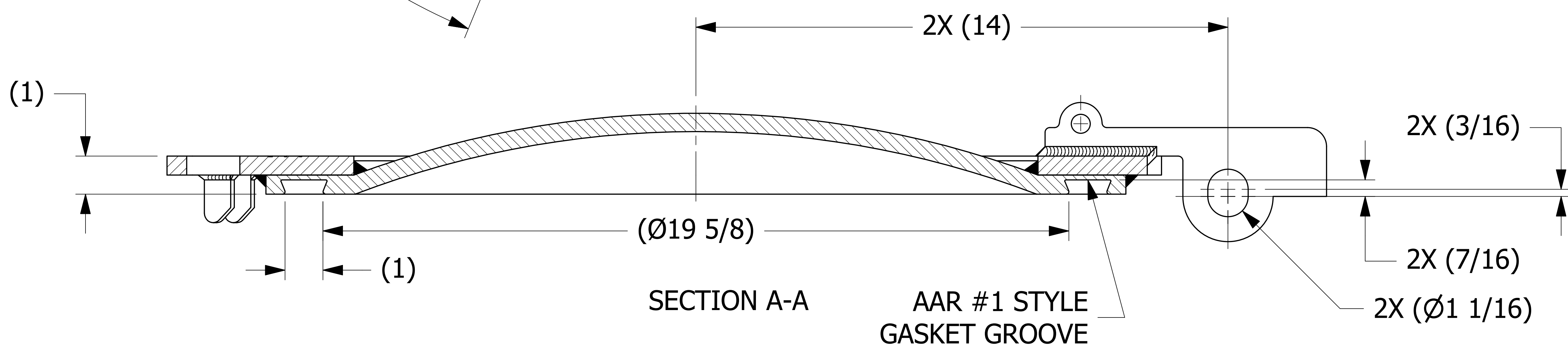


SALES DRAWING SALES DRAWING SALES DRAWING

SALES DRAWING SALES DRAWING SALES DRAWING



NOTE:
AAR APPROVAL # E-182113.



REV	BY	DATE	DESCRIPTION
J	WEB	5-16-19	REMOVED QAP4A-1 NOTE; Q-2.15.7 WAS QAP4C-1; D-008 WAS DSS 12; ADDED D-005 NOTE; AAR # WAS E-089005
I	RJP	10-11-17	HINGE WELD WAS 3/8"; 3.00 +.00/-.06 WAS 3.00; ADDED NOTE 6; ADDED "SALCO" TO ENGRAVING
H	RJP	5-2-17	TMCDR208501 WAS TMCR208C1 & TMCDCSC1MF; B44637 WAS TMCHS4UT; 2X .44 WAS .438; 4X .06 WAS 4X .063; "TEST PER QAP4C-1" WAS "MUST PASS QAP4C-1"; ADDED 2X (Ø1 1/16); REMOVED 6X 11 61/64 & QAP5A-1; ADDED 2X (3/16) & LOT CONTROL; UPDATED WELD NOTE
G	KHK	1-3-13	ADDED SECTION D. UPDATED VIEWS, BOM, DRAWING SIZE
F	JJK	4-20-12	ADDED NOTE #5 & HEAT/LOT NOTE
E	CHL	11-1-10	UPDATED NOTES, UPDATED WELD SYMBOL, ADDED PARTNUMBER TO RING SURFACE
D	CHL	5-27-08	UPDATED NOTES & ADDED VIEW C
C	AJB	5-5-06	AAR APPROVAL WAS E-989070
B	CHL	8-8-00	CHANGED DIM 11.69 TO 11.96
A	CHL	2-24-00	UPDATED TO 3D

UNLESS OTHERWISE SPECIFIED DIMENSIONAL TOLERANCES FRACTIONAL: ±1/16 X.XX: ±.03 X.XXX: ±.015 ANGULAR: ±1° DEBURR ALL SHARP EDGES. ALL MACHINED SURFACES TO HAVE A 125 RMS FINISH UNLESS NOTED OTHERWISE.	DRAWN BY: FOD
THIRD ANGLE PROJECTION	CHECKED BY: SAB
	PROTOTYPE BY: FOD
	PROTOTYPE DATE: 11/5/1999
	APPROVED FOR PRODUCTION BY: SAB
	PRODUCTION DATE: 11/5/1999

SALCO PRODUCTS, INC.

PART NAME: **MANWAY COVER 20" 8-BOLT**

MATERIAL: **CARBON STEEL**

PROJECT #: **991104** SHEET #: **1 OF 1** SCALE: **2:3**

DRAWING #: **E13883** PART #: **TMC2085**

THIS PRINT, PROPERTY OF SALCO PRODUCTS INC. CONTAINS PROPRIETARY INFORMATION AND MUST NOT BE COPIED, REPRODUCED, OR USED DETRIMENTALLY TO OUR INTEREST.